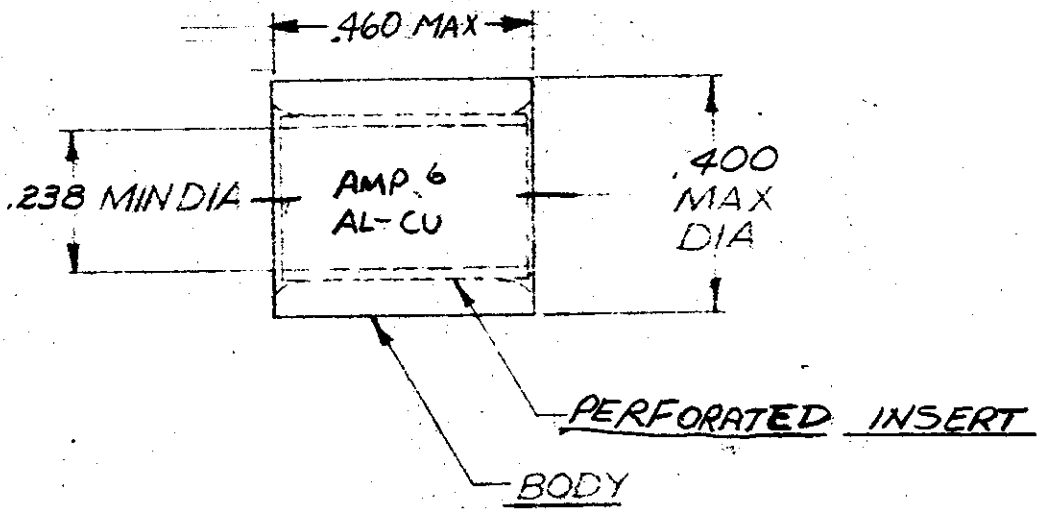


MADE IN AMERICAN PROJECTION

AMP INCORPORATED. ALL RIGHTS RESERVED. AMP PRODUCTS COVERED BY PATENTS AND/OR PATENTS PENDING.

REVISIONS

| LTR | DESCRIPTION | DATE | APPROVED |
|-----|-----------------------------|-------------|--------------------|
| 0 | NPS 70-0613 (REV.1) | WM 2-15-71 | FCY |
| A | REV PER NPS 70-0613 (REV.2) | AB 3-22-71 | FCY |
| B | REVISED PER F-553 | WM 5-12-71 | FCY |
| C | REVISED MATERIAL BLOCK | RA 6/15/77 | <i>[Signature]</i> |
| D | REV PER G-2072 | JR 3-21-87 | <i>[Signature]</i> |
| E | REV PER G-4638 | TMS 6-4-88 | JT |
| F | REV PER G 4889 | DKS 11-8-88 | W.J.V. |



| | | | |
|---|--------------|----------|--|
| 1 | WIRE SPLICE | 52746 | INSERT: Perforated Brass, 016 ^{±.002} THK. - (MIL-C-50) - TIN PLATED (MIL-T-10727) BODY: COPPER, 048 ^{±.002} THK. - (SQ-C-576) - TIN PLATED (MIL-T-10727) |
| QTY DESCRIPTION | | PART NO. | MATERIAL SPECIFICATION |
| UNLESS OTHERWISE SPECIFIED DIMENSIONS ARE IN INCHES TOLERANCES ON: DECIMALS = .003 ANGLES = 5° | CONTRACT NO. | | AMP INCORPORATED HARRISBURG, PENNSYLVANIA |
| | DR. | DATE | |
| MATERIAL | CHK. | DATE | WIRE SPLICE |
| SEE TABLE | APPD. | DATE | COPALUM-PARALLEL-STRANDED/SOLID WIRE SIZE: 6 |
| | REL. | DATE | SIZE |
| | DSGN APPD. | | CODE IDENT NO. |
| | OTHER APPD. | | NUMBER |
| | | | A 00779 52746 |
| | | | SCALE NTS SHEET 1 OF 1 |